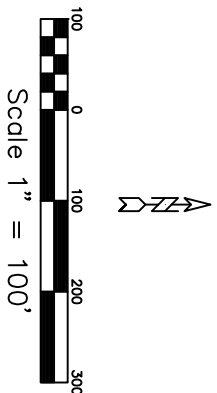


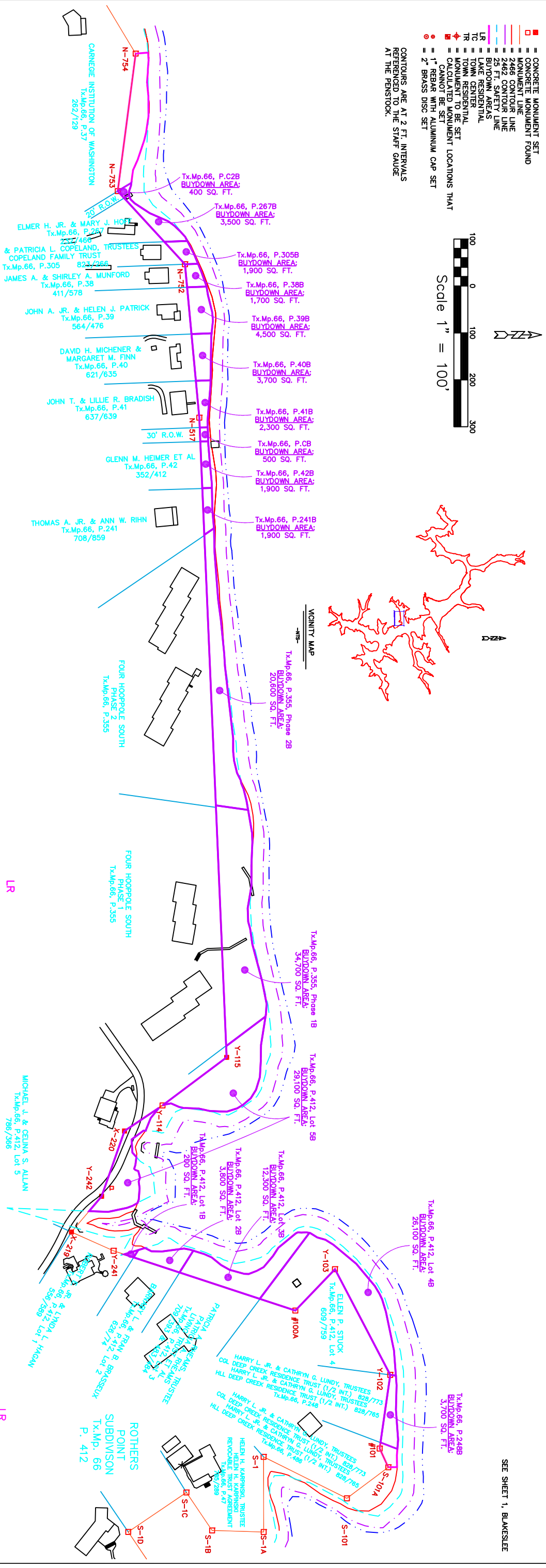
LEGEND

- CONCRETE MONUMENT SET
- MONUMENT FOUND
- 2488 CONTOUR LINE
- 2482 CONTOUR LINE
- 2486 CONTOUR LINE
- BUYDOWN AREAS
- LAKE RESIDENTIAL
- TR = TOWN CENTER
- TC = TOWN CENTER
- MONUMENT TO BE SET
- CALCULATED MONUMENT LOCATIONS THAT CANNOT BE SET
- 1" REBAR WITH ALUMINUM CAP SET
- 2" BRASS DISC SET

CONTOURS ARE AT 2 FT. INTERVALS REFERENCED TO THE STAFF GAUGE AT THE PENNSHOCK.



SEE SHEET 1, BLAKESLEE



SEE SHEET 4, HOOP POLE

NOT WITHIN SANITATION DISTRICT

NOT WITHIN SANITATION DISTRICT

DEEP CREEK LAKE SURVEY DATA

1. HORIZONTAL DATUM
 HORIZONTAL DATUM = LAMBERT NAD 83 DATUM
 NAD 83 DATUM = FIELD OBSERVATION X COMBINED SCALE FACTOR
 COMBINED SCALE FACTOR = GRD SCALE FACTOR X ELEVATION SCALE FACTOR
 APPROXIMATE COMBINED SCALE FACTOR = 0.999899
2. VERTICAL DATUM
 VERTICAL DATUM = LAKE DATUM
 LAKE DATUM = NAVD 88 DATUM - 1.80 FT.

PENELEC CALLS

CONC/MON.	BEARING	DISTANCE
S-1A	S 88° 10' W	160.39 FT.
S-1	S 89° 55' W	160.21'
S-101	N 24° 42' E	198.60 FT.
S-101A	N 36° 41' W	110.10 FT.
S-101A	S 64° 10' W	43.65 FT.
Y-102	N 85° 20' W	153.70 FT.
Y-102	S 61° 23' W	230.60 FT.
Y-103	S 47° 27' E	119.30 FT.
Y-103	S 17° 19' W	413.00 FT.
Y-241	S 22° 55' W	102.50 FT.
Y-241	N 47° 35' W	102.50 FT.
Y-219	N 72° 36' W	147.50 FT.
Y-242	S 46° 02' W	210.60 FT.
X-220	N 36° 10' W	98.00 FT.
X-220	N 38° 43' W	186.40 FT.
X-219	N 38° 21' W	328.80 FT.
X-219	S 83° 21' W	210.60 FT.
N-752	S 46° 02' W	210.60 FT.
N-753	N 84° 05' W	295.60 FT.
N-754	S 57° 37' W	374.40 FT.
N-518	S 57° 37' W	374.40 FT.

SURVEY CALLS

CONC/MON.	BEARING	DISTANCE
S1B-S1A	N 01° 46' E	109.92'
S1A-S1	S 89° 55' W	160.21'
S1-S101	N 28° 30' E	198.21'
S101-S101A	N 36° 41' W	110.39'
S101A-S101	S 65° 07' W	43.88'
#101-Y102	N 81° 49' W	158.62'
Y102-Y103	S 62° 24' W	254.09'
Y103-Y104	S 46° 14' E	122.00'
#104-Y241	S 23° 59' W	407.33'
Y241-Y219	S 23° 59' W	98.13'
Y219-Y242	N 49° 50' W	99.64'
Y242-X220	N 70° 43' W	147.49'
X220-Y114	N 33° 56' W	170.79'
Y114-Y115	S 36° 52' W	97.53'
Y115-N517	S 87° 33' W	1364.29'
N517-N752	S 84° 40' W	328.30'
N752-N753	S 47° 25' W	211.58'
N753-N754	N 82° 35' W	295.54'
N754-N518	S 58° 58' W	374.58'

COORDINATE SCHEDULE

Mon.	North	East
S1	671896.14	662067.12
S1A	671896.39	662227.34
S1B	671786.52	662223.94
S1C	671731.80	662143.06
X220	671607.85	662227.16
N754	671623.67	659077.11
N753	671585.54	659370.18
N752	671288.70	659825.86
N517	671259.22	659825.86
N518	672143.33	662049.46
#101	672073.53	662155.56
S1A	672165.91	661892.46
S1C	671890.86	661318.37
X220	671599.94	661572.81
Y242	671551.24	661512.03
Y241	671488.98	661528.17
Y219	671578.63	661628.07
Y114	672048.18	661862.30
Y115	672048.18	661862.30
N517	672281.79	662089.27
N518	672073.53	662155.56
S101	673406.63	661751.18
Y114	671690.86	661318.37

© COPYRIGHT - 2000 BY MORGAN C. FRANCE, L.S., P.E. ALL RIGHTS RESERVED

DRAWN BY: SUSAN N. EVANS PERANDI and MARGARET A. JORDAN DATE: HOOPER 123\C\DATA\EP\PROJECTS\DDQ2000\HOOPER6	APPROVED BY: MORGAN C. FRANCE SERIAL NO. PLOT DATE: 7/10/00 at 10:30	REVISIONS 7/19/02 7/01/03	Prepared For: DEPT. OF GEN. SERVICES - REAL ESTATE STATE OF MARYLAND 300 West Preston Street, Room 601 Baltimore, Maryland 21201	Prepared By: MORGAN C. FRANCE, L.S., P.E. 10 North Third Street Odell, Maryland 21550 (301) 334-2305	PROJECT DEEP CREEK PROJECT BUY DOWN SURVEY	SHT. NAME DRAWING 6, HOOP POLE	SHT. NO. 6
--	--	---------------------------------	--	--	--	-----------------------------------	---------------